

# ALGILATEX

SBR LATEX POLYMER ADDITIVE FOR POLYMER MODIFIED CONCRETE / MORTAR

## DESCRIPTION:

Algilatex is a SBR polymer latex additive for modifying cement concrete/mortar to improve the mechanical properties such as flexure and tension. It improves the chemical and water resistance of cementitious mixes. It can be used internally or externally and in areas of continuous or intermittent water contact.

## ADVANTAGES:

- Excellent bonding agent
- Allows thinner sections.
- Reduces Cracking
- Improves workability
- Improves adhesion
- Reduces permeability of the mix
- Improves abrasion resistance
- Improves chemical resistance.

## USES:

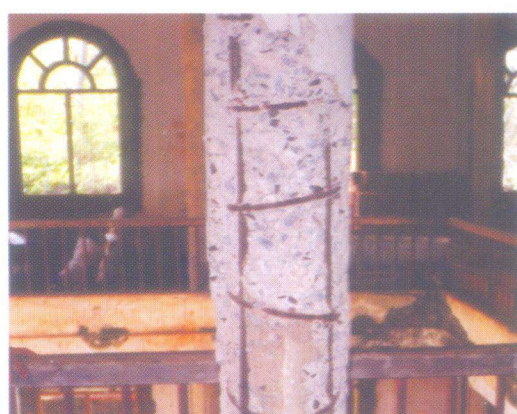
Due to excellent chemical resistance property of polymer modified concrete it can be used,

- As a bond coat
- In Chemical plants
- Dairies
- Effluent treatment plants
- Food industry
- Industrial floor
- In screeding compound
- As an Excellent coating on concrete surfaces to provide water tight condition.
- Excellent with repair mortar especially for damaged or dilapidated structures.
- Due to very low permeability of polymer modified mortars, remarkable improvement in prevention of carbonation and chloride penetration is obtained.
- Latex modified mortar cures in air, thus eliminating /reducing the need of water curing.
- As an additive to cement grout.

## METHOD OF USE:

Surface preparation: Clean the surface of concrete so that it is free from oil, grease, cement, laitance and dirt etc., and saturate the surface of concrete with just enough water.

Aggregate: Clean, dry and well graded aggregates of the following size should be used. For mortar of 5mm thickness, aggregates of maximum size 2mm may be used. From 5mm to



BEFORE



AFTER

15 mm thick mortar maximum aggregates size may be 3mm, and for above 15 mm thick mortar aggregates of maximum size of 5mm may be used. Mixing of diluted latex should be done manually. In case of mechanical mixing, it should be stopped once the mix is cohesive.

Caution: Excessive mixing will entrain excessive air which will reduce the strength of mortar. Bonding coat should be made only with cement and not with polymer alone. Polymer modified concrete should be cured properly.

Email: [contact@algitechchemicals.net](mailto:contact@algitechchemicals.net)

[www.algitechchemicals.in](http://www.algitechchemicals.in)

# ALGILATEX

LATEX POLYMER ADDITIVE FOR POLYMER MODIFIED CONCRETE / MORTAR

## APPLICATION :

Water proof plaster, masonry jointing, Polymer modified Mortar.

For flooring polymer modified concrete:

Cement	50	50
Sand	150	75
Aggregate		150
Algilatex		5(3-6)
Water		
Flow(MM)	40	
Slump		75

Polymer modified cement grout: Cracks should be widened into V shape and grouting should be done at 1mC/C by fixing the nozzles. Algi Latex should be used in the ratio of 5 litre /bag of cement

**PACKAGING:** 5kg, 20 kg, 100kg, & 210 kg. HDPE carbuoys.

## TECHNICAL DATA

Type	: Styrene Butadiene liquid
Colour	: White
Specific gravity	: 1.025 ± 0.01
Viscosity	: 35-40 secs on B2 cup
pH	: 7
Storage condition	: Protect from frost, from extreme heat and direct sunlight
Shelf life	: 1 year in original sealed packing



High Quality input



Research & Development



Thoroughly Tested Output



Modern Packaging

An ISO 9001-2000 Company

**ALGI TECH**

**ALGITECH CHEMICALS**

12/1A, Varambally, NH-17, Brahmapur - 576 213 Udupi Dist.  
Tel : (0820) 2560385, 2561483  
Mobile : 98452 42085, 9880779350, Fax: (0820) 2560285  
Email : [contact@algitechchemicals.net](mailto:contact@algitechchemicals.net)  
[www.algitechchemicals.in](http://www.algitechchemicals.in)

NOTE: The Product should be used in accordance with the manufacturer's instructions. The manufacturer will not be held liable for the performance of the product if the same is not used as per the regulations and limitations specified by the manufacturer and also in conditions where the conditions of use are beyond the control of the manufacturer.

Email: [contact@algitechchemicals.net](mailto:contact@algitechchemicals.net)

[www.algitechchemicals.in](http://www.algitechchemicals.in)